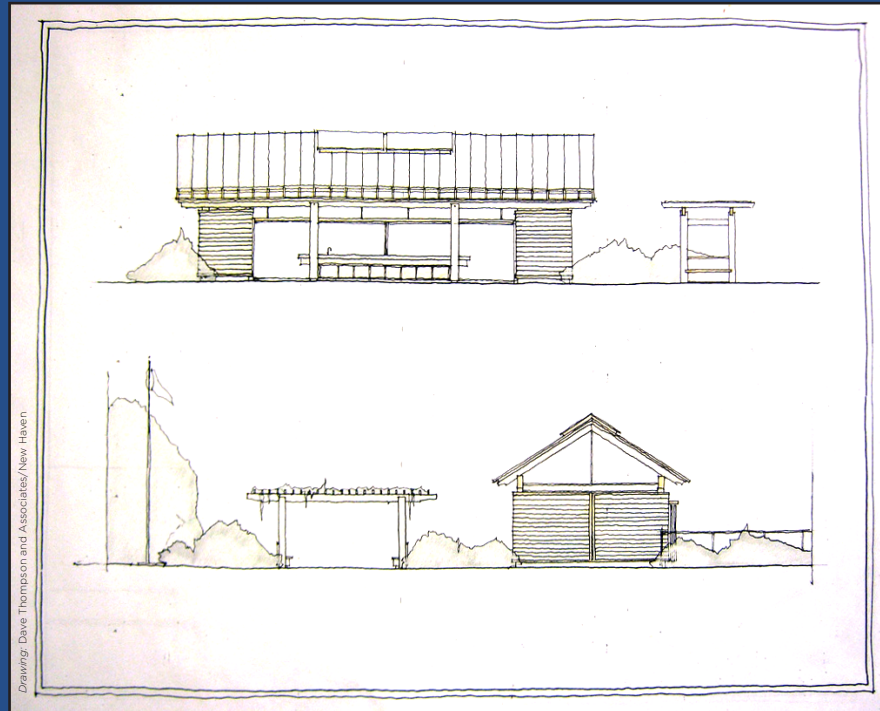


NEW HAVEN

THE COMMUNITY INVESTMENT ACT SUCCESS STORIES

No.
189



Located on a 20 acre site at the base of West Rock Ridge in New Haven, **Common Ground** is a center for environmental learning and leadership. Common Ground initiatives include an environmentally-themed, college-prep charter high school, a variety of community environmental programs, and a **20-acre urban farm**.

In 2010 Common Ground received a \$19,000 grant from the **CT Dept. of Agriculture's Agriculture Viability Grant Program**, funded by the **Community Investment Act (CIA)**, to build a Harvest Pavilion. The grant was matched by a Community Development Block Grant from the city of New Haven, support from the State Farm Youth Advisory Board, and a number of individual donations. The Harvest Pavilion will help ensure the continued viability of Common Ground's urban farm by increasing the capacity to grow, process, store, and market produce.



The Pavilion, which will be completed in June of this year, will provide a well designed, efficient venue for processing produce from the farm – helping to meet the goal of increasing farm production to 10,000 pounds per year, and getting this harvest to those who need it most. It will serve as the permanent home of an on-site farm market where both Common Ground's produce and value-added products from other local farms in the New Haven region will be offered for sale.

The Pavilion will welcome over 7,000 visitors to the site each year, many of whom come from economically disadvantaged households. A new Market Manager position has been created to oversee activities. Members of Common Ground's Green Jobs Corp – a program that provides real employment to high school students with an emphasis on leadership and youth development – will also be hired to work at the Pavilion.

THE COMMUNITY INVESTMENT ACT • PA 05-228 • PA 09-3 • WWW.COMMUNITYINVESTMENTACT.ORG

The Community Investment Act, enacted in 2005, stimulates private investment to protect our natural, agricultural, and historic resources, and to assist affordable housing. CIA funds come from a surcharge on real estate document recording fees. They are then invested in agriculture viability, dairy farm support, historic preservation, open space, farmland, affordable housing, Local Capital Improvement Projects and Town Clerk records management.